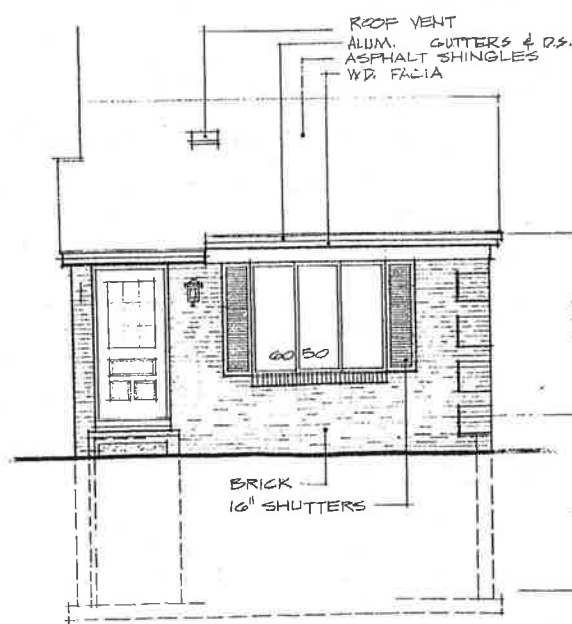
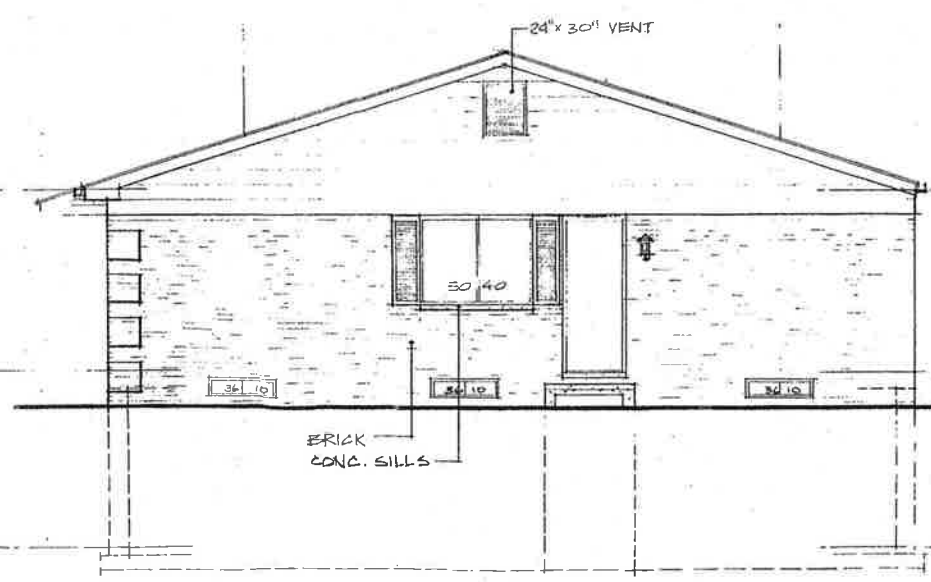


FIRST FLOOR

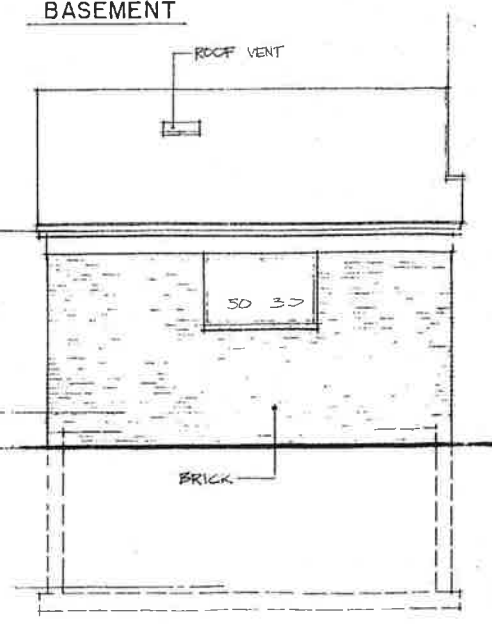
BASEMENT



FRONT ELEVATION



SIDE ELEVATION

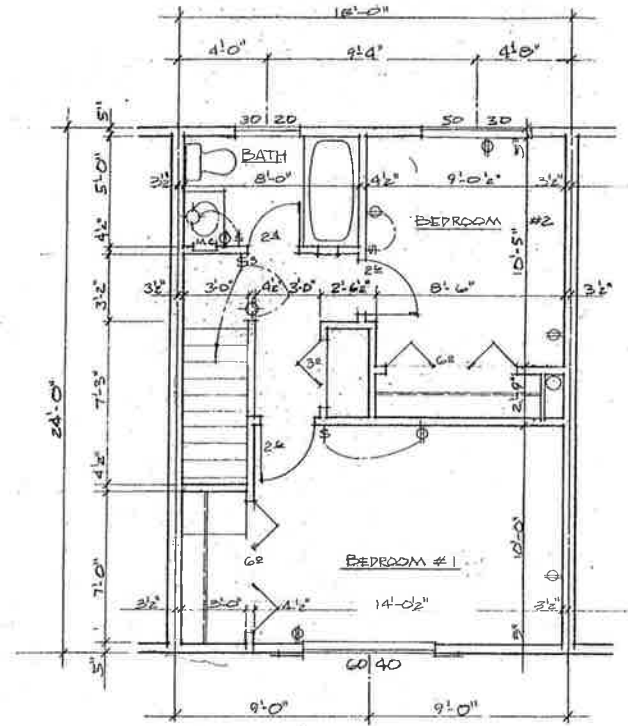


REAR ELEVATION

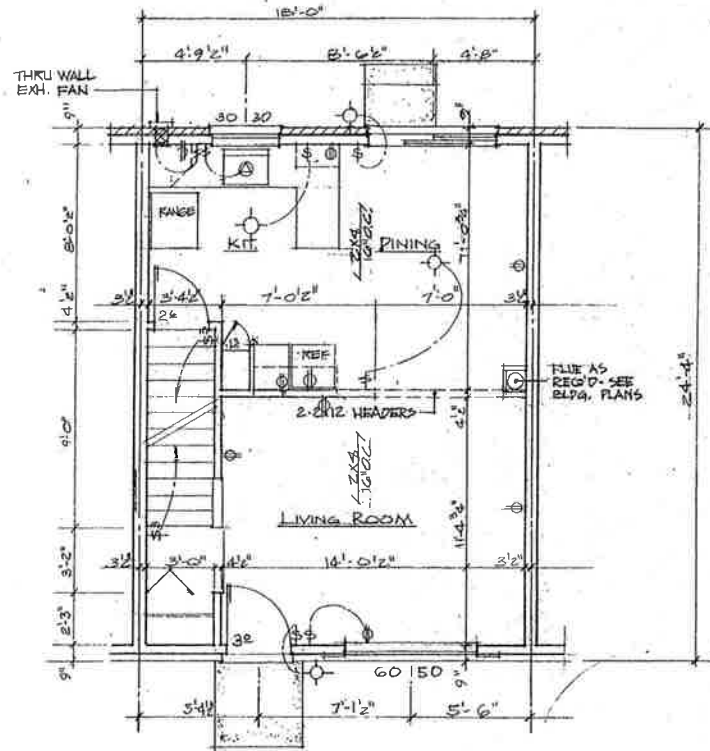
UNIT A, 1 BEDROOM
1/4" = 1'-0"



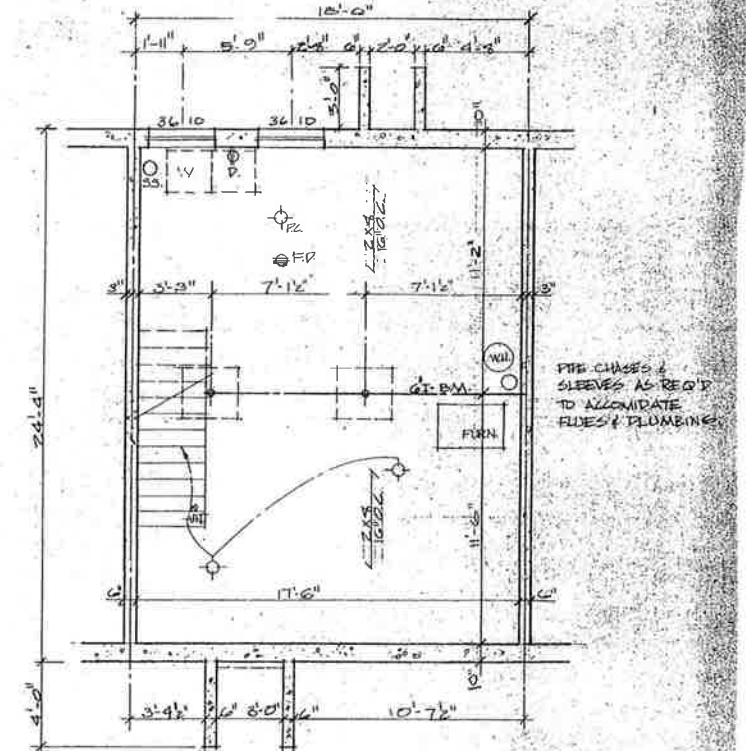
DATE	9-25-70
REVISIONS	3-3-71
DRAWN BY	
JOB NO.	7011
SHEET	



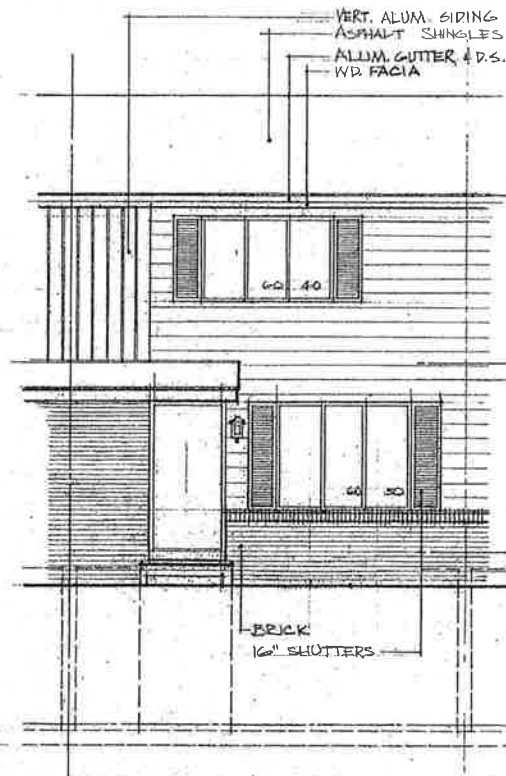
SECOND FLOOR



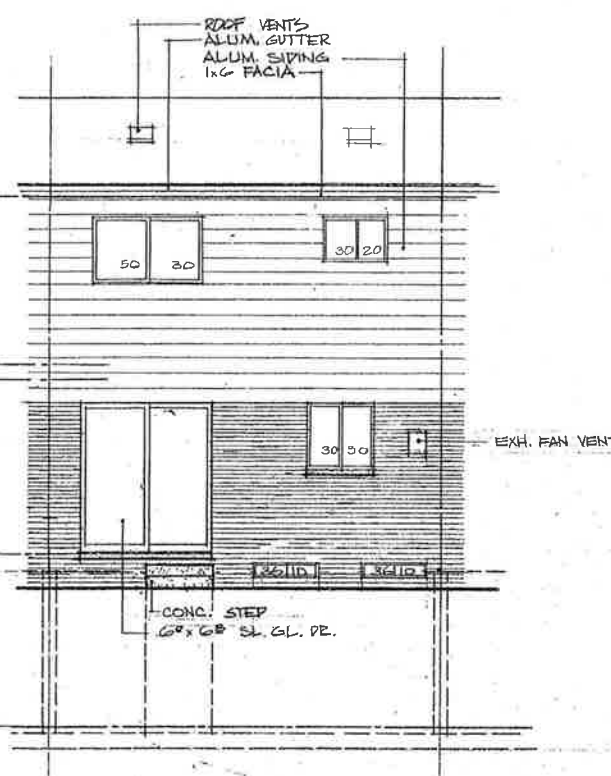
FIRST FLOOR



BASEMENT



FRONT ELEVATION



REAR ELEVATION

NOTE:
SEE ELEC. ELEV. FOR
VARIATIONS IN ALUM.
SIDING AND PORCH IN
THIS AREA

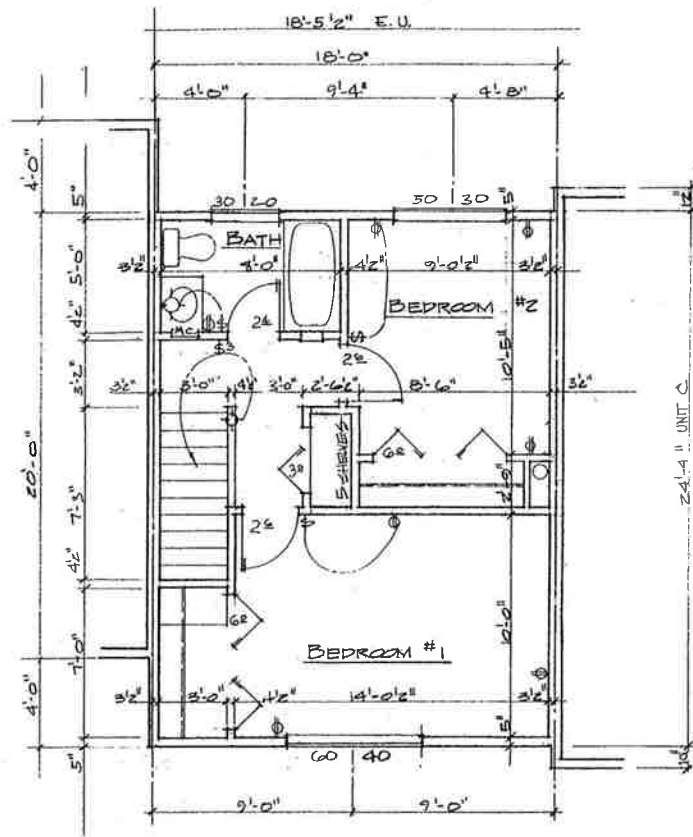


DATE
7-15-70

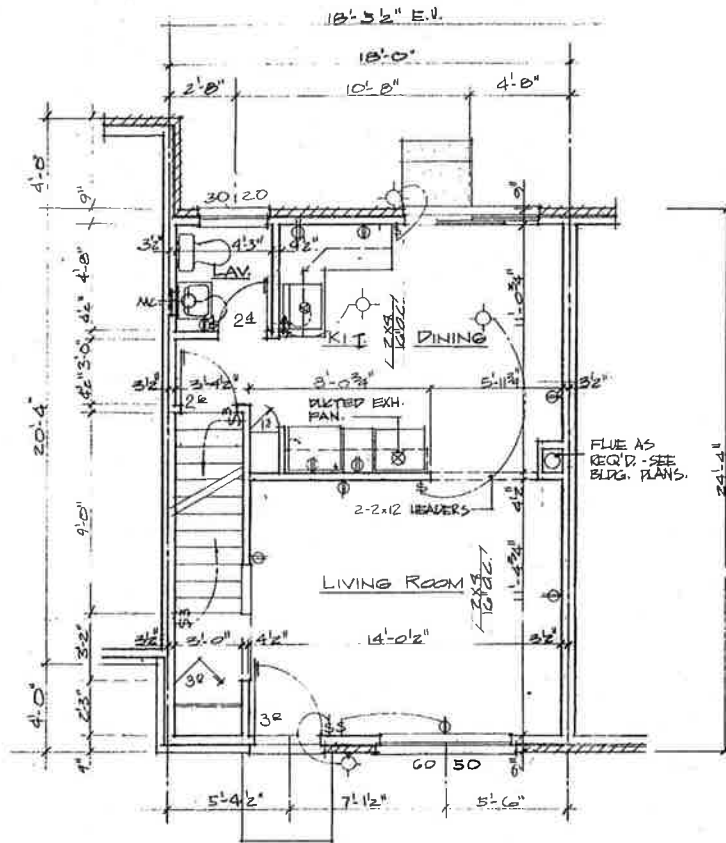
REVISIONS
3-3-71

DRAWN BY
M.P.

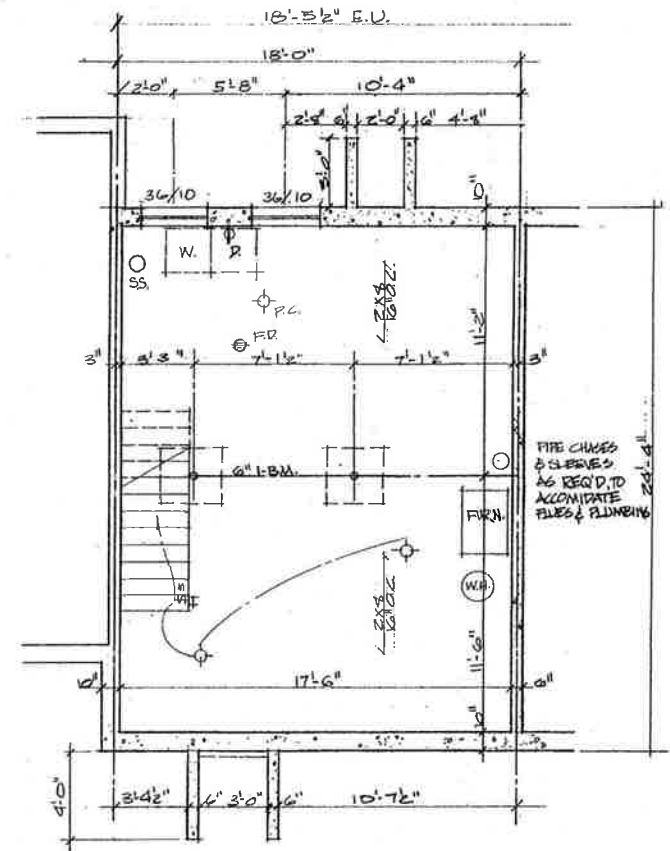
JOB NO.
7011



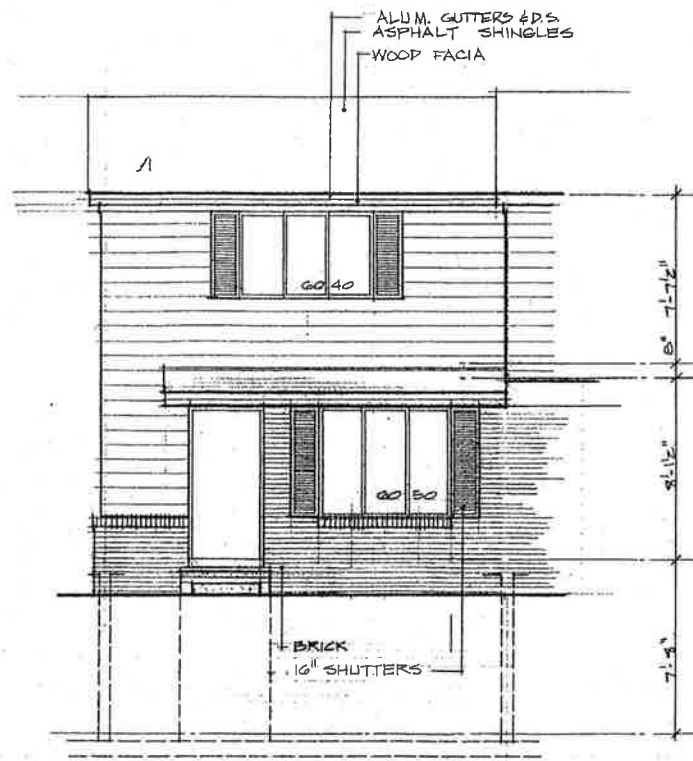
SECOND FLOOR



FIRST FLOOR



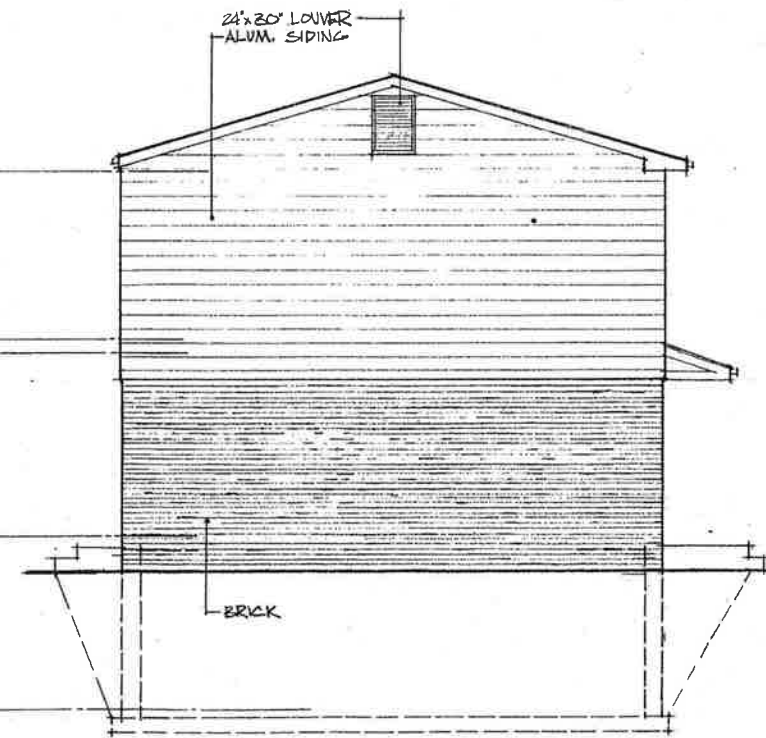
BASEMENT



FRONT ELEVATION

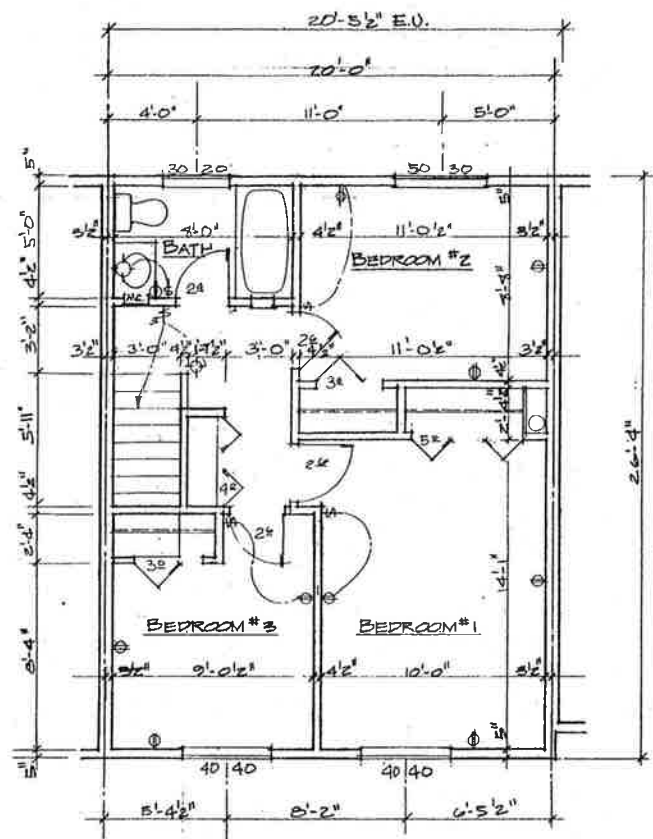


REAR ELEVATION

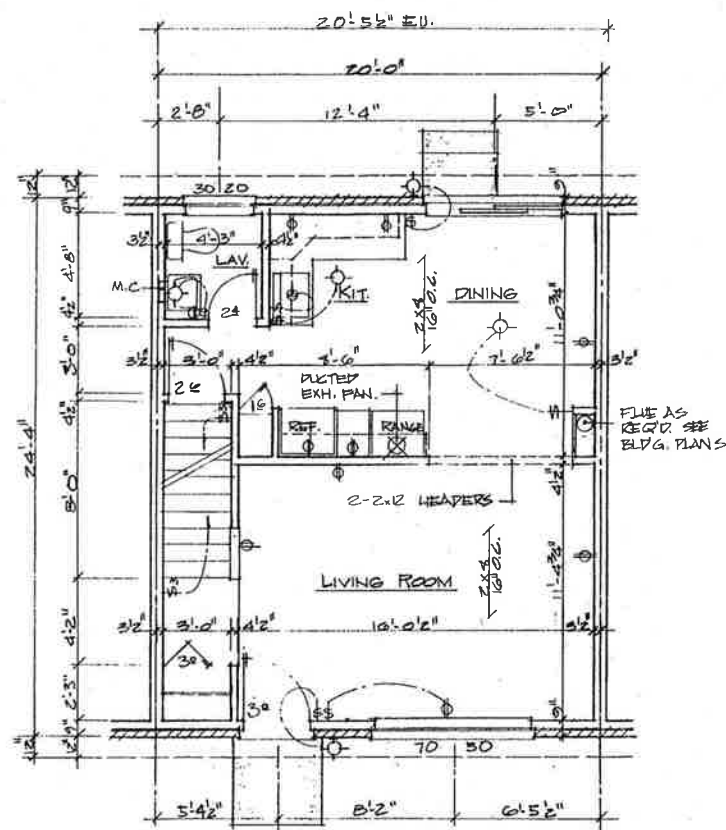


UNIT B-1, 2 BEDROOM

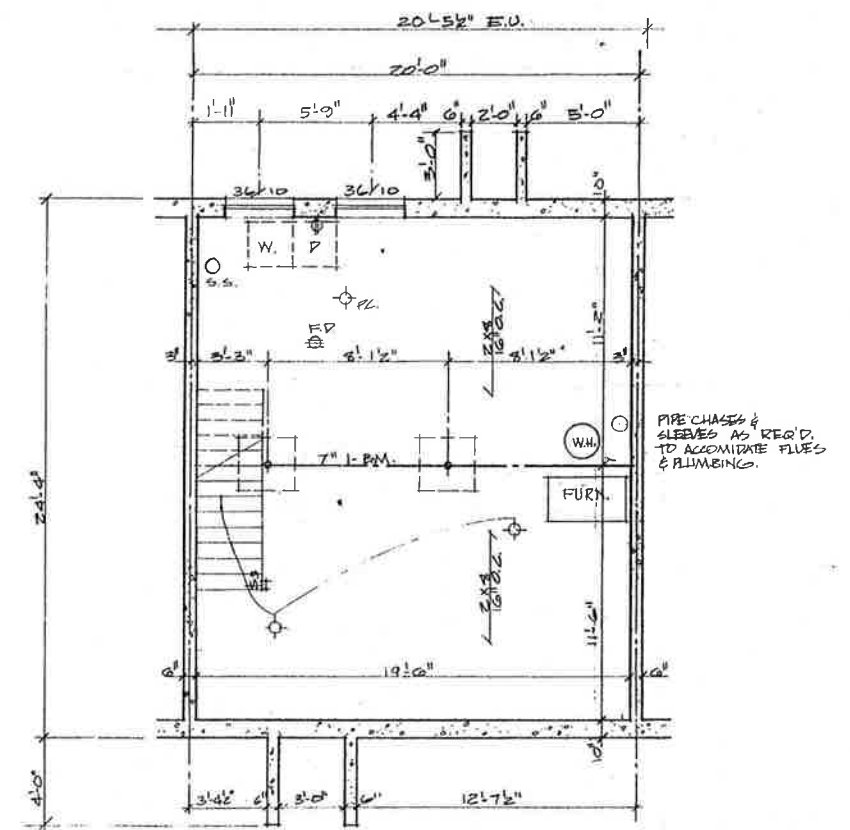
4'-1'-0"



SECOND FLOOR



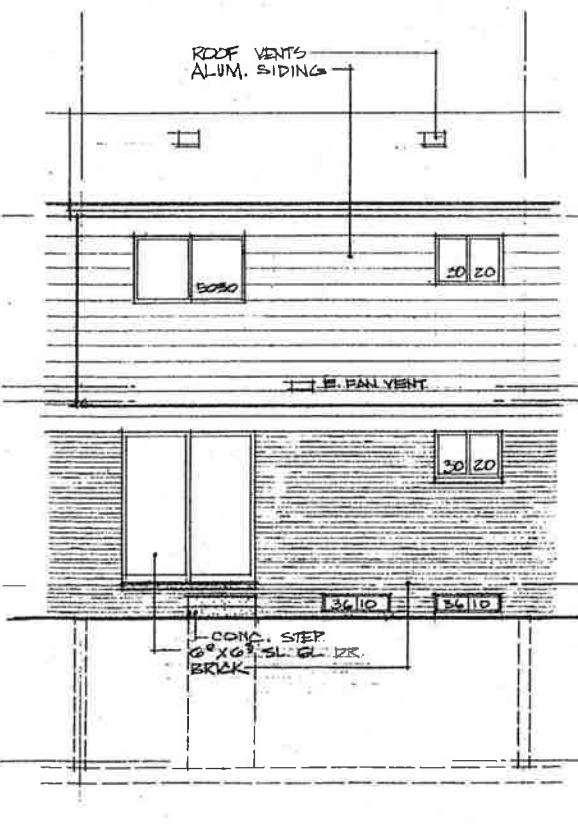
FIRST FLOOR



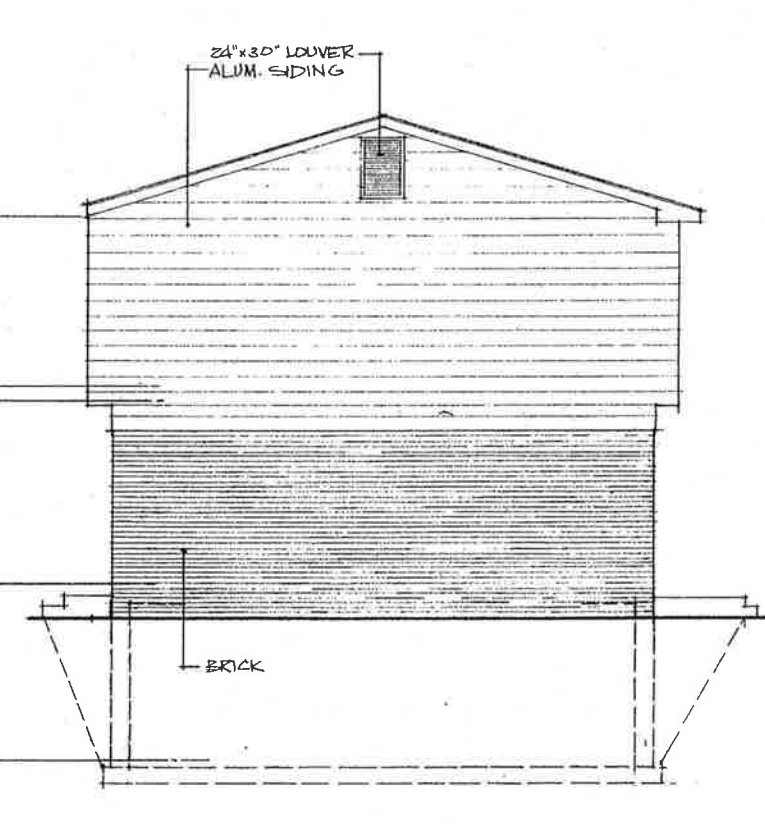
BASEMENT



FRONT ELEVATION



REAR ELEVATION



UNIT C, 3 BEDROOM

4"=1'-0"



DATE
9-25-70

REVISIONS
3-3-71

DRAWN BY
M.P.

JOB NO.
7011

Sheet